

**ASTEL**  
LIGHTING



**UNDERWATER POOL LED LIGHTING**  
**2017**



The **ASTEL LIGHTING** brand name was launched in 2009 as the result of very well accepted underwater marine lighting products fitted in luxury yachts.

The **METEOR** series of the new and world's first compact ultra-thin LED underwater pool light with built-in driver is designed to use the latest LED lighting technology.

The main feature is that **METEOR** lights can be installed on a flat surface without any surface preparation during construction. For other installations and replacements the special adapters are available.

The multi-color versions of **METEOR** series allow changing the color of lighting manually or automatically through the complete rainbow spectrum.

The **METEOR XP** series of the new extremely powerfull LED lights is basically designed for installation in large pools. The special designed niches allow standard installations in pools using different materials and finishes.

All the models are designed with stainless-steel casings.

# Table Of Contents

|  |    |
|--|----|
| <b>UNDERWATER POOL LED LIGHTS</b>                      | 4  |
| METEOR LSR0640   | 4  |
| METEOR LSR1280   | 6  |
| METEOR LSR36240  | 8  |
| METEOR LSR36500  | 10 |
| METEOR XP LFR3210                                      | 12 |
| METEOR XP LFR3215                                      | 12 |
| <b>ACCESSORIES</b>                                     | 14 |
| PAR56 Adapter LPAR56                                   | 14 |
| Surface Mount Niche LSMN 0640                          | 16 |
| Surface Mount Niche LSMN 1280                          | 16 |
| Surface Mount Niche LSMN 36240                         | 16 |
| Surface Mount Niche LSMN 36500                         | 16 |
| Surface Mount Right-Angle Niche LRMN 0640              | 18 |
| Surface Mount Right-Angle Niche LRMN 1280              | 18 |
| Surface Mount Right-Angle Niche LRMN 36240             | 18 |
| Surface Mount Right-Angle Niche LRMN 36500             | 18 |
| Surface-Mount Right-Angle Niche Accessory LSB 0640     | 18 |
| Surface-Mount Right-Angle Niche Accessory LSB 1280     | 18 |
| Surface-Mount Right-Angle Niche Accessory LSB 36240    | 18 |
| Surface-Mount Right-Angle Niche Accessory LSB 36500    | 18 |
| Concrete Pool Niche LCPN 0640                          | 20 |
| Concrete Pool Niche LCPN 1280                          | 20 |
| Concrete Pool Niche LCPN 36240                         | 20 |
| Liner Pool Niche LLPN 0640                             | 22 |
| Liner Pool Niche LLPN 1280                             | 22 |
| Liner Pool Niche LLPN 36240                            | 22 |
| Liner Pool Niche LLPN 36500                            | 22 |
| Liner / Stainless-Steel Pool Niche Accessory LLS 0640  | 24 |
| Liner / Stainless-Steel Pool Niche Accessory LLS 1280  | 24 |
| Liner / Stainless-Steel Pool Niche Accessory LLS 36240 | 24 |
| Liner Pool Niche Accessory LLR 0640                    | 24 |
| Liner Pool Niche Accessory LLR 1280                    | 24 |
| Liner Pool Niche Accessory LLR 36240                   | 24 |
| Liner Pool Niche Accessory LLR 36500                   | 24 |
| Gasket LSG 0640  | 25 |
| Gasket LSG 1280  | 25 |
| Gasket LSG 36240                                       | 25 |
| O-Ring Set LSO 0640                                    | 25 |
| O-Ring Set LSO 1280                                    | 25 |
| O-Ring Set LSO 36240                                   | 25 |
| Concrete Pool Niche LCPN XP32                          | 26 |
| Liner Pool Niche LLPN XP32                             | 28 |
| Liner Pool Niche LLGN XP32                             | 30 |
| Synchronization Unit LSU08                             | 32 |
| PWM Dimmer LDU13                                       | 32 |
| DMX512 Interface LXU01                                 | 33 |
| DMX512 Interface LXU03                                 | 33 |

Due to continuous product improvement all specifications and design are subject to change without notice.



# Underwater Pool LED Lights

Ultra-thin compact surface-mount design.

Single-color light control by using optional momentary switch or optional DMX512 interface LXU01 or LXU03 and PWM dimmer LDU13 with built-in ASTEL protocol.

Multi-color RGB light control with dimming and changing of color of lighting manually or automatically through the complete rainbow spectrum by using optional momentary switch or optional DMX512 interface LXU01 or LXU03 with built-in ASTEL protocol.



- Stainless-Steel Casing
- 6 Power LEDs Design
- Cool White, Warm White, Blue, Green and Multi-Color RGB Lighting
- High Grade Polycarbonate Glass Optical Window
- Vacuum Metalized Reflector
- Remote Control
- Microprocessor Control (network)
- Digital Dimming
- Polarity Protection
- Transient Protection
- Thermal Protection
- Low Power Consumption
- Simple Installation

## METEOR LSR0640

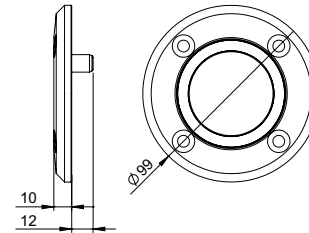
|                       |  |
|-----------------------|--|
| Power supply          | 12–24 Vdc, max. 680 mA/12 Vdc or 380 mA/24 Vdc |
| Beam angle            | 60° (standard)                                 |
| Optical window        | High-grade polycarbonate glass                 |
| Luminous flux         | max. 950 lm (cool white)                       |
| Operating temperature | -10 °C - +50 °C                                |
| Casing                | Stainless-steel (SAE316L)                      |
| Protection            | IP 68  |
| Dimensions            | Ø99 x 10 mm                                    |
| Weight                | 0.4 kg   |

## Color of lighting

|           |  |
|-----------|--|
| <b>W</b>  | <input type="checkbox"/> cool white      |
| <b>WW</b> | <input type="checkbox"/> warm white      |
| <b>B</b>  | <input type="checkbox"/> blue            |
| <b>G</b>  | <input type="checkbox"/> green           |
| <b>M</b>  | <input type="checkbox"/> RGB multi-color |

## Beam angle

|          |          |
|----------|----------|
| <b>-</b> | standard |
| <b>D</b> | wide     |



Simply...the brightest



# Underwater Pool LED Lights

Ultra-thin compact surface-mount design.

Single-color light control by using optional momentary switch or optional DMX512 interface LXU01 or LXU03 and PWM dimmer LDU13 with built-in ASTEL protocol.

Multi-color RGB light control with dimming and changing of color of lighting manually or automatically through the complete rainbow spectrum by using optional momentary switch or optional DMX512 interface LXU01 or LXU03 with built-in ASTEL protocol.



- Stainless-Steel Casing
- 12 Power LEDs Design
- Cool White, Warm White, Blue, Green and Multi-Color RGB Lighting
- High Grade Polycarbonate Glass Optical Window
- Vacuum Metalized Reflector
- Remote Control
- Microprocessor Control (network)
- Digital Dimming
- Polarity Protection
- Transient Protection
- Thermal Protection
- Low Power Consumption
- Simple Installation

## METEOR LSR1280

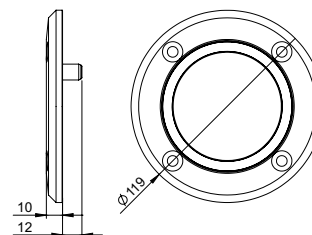
|                       |   |
|-----------------------|---|
| Power supply          | 12-24 Vdc, max. 1.4 A/12 Vdc or 650 mA/24 Vdc |
| Beam angle            | 60° (standard)                                |
| Optical window        | High-grade polycarbonate glass                |
| Luminous flux         | max. 1.900 lm (cool white)                    |
| Operating temperature | -10°C - +50°C                                 |
| Casing                | Stainless-steel (SAE316L)                     |
| Protection            | IP 68   |
| Dimensions            | Ø119 x 10 mm                                  |
| Weight                | 0.6 kg  |

## Color of lighting

|           |  |
|-----------|--|
| <b>W</b>  | <input type="checkbox"/> cool white      |
| <b>WW</b> | <input type="checkbox"/> warm white      |
| <b>B</b>  | <input type="checkbox"/> blue            |
| <b>G</b>  | <input type="checkbox"/> green           |
| <b>M</b>  | <input type="checkbox"/> RGB multi-color |

## Beam angle

|          |          |
|----------|----------|
| <b>-</b> | standard |
| <b>D</b> | wide     |



Simply...the brightest



# Underwater Pool LED Lights

Ultra-thin compact surface-mount design.

Single-color light control by using optional momentary switch or optional DMX512 interface LXU01 or LXU03 and PWM dimmer LDU13 with built-in ASTEL protocol.

Multi-color RGB light control with dimming and changing of color of lighting manually or automatically through the complete rainbow spectrum by using optional momentary switch or optional DMX512 interface LXU01 or LXU03 with built-in ASTEL protocol.



- Stainless-Steel Casing
- 36 Power LEDs Design
- Cool White, Warm White, Blue, Green and Multi-Color RGB Lighting
- High Grade Polycarbonate Glass Optical Window
- Vacuum Metalized Reflector
- Remote Control
- Microprocessor Control (network)
- Digital Dimming
- Polarity Protection
- Transient Protection
- Thermal Protection
- Low Power Consumption
- Simple Installation

## METEOR LSR36240

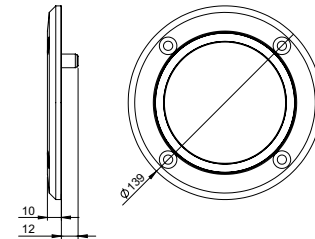
|                       |  |
|-----------------------|--|
| Power supply          | 12-24 Vdc, max. 4.3 A/12 Vdc or 1.9 A/24 Vdc |
| Beam angle            | 60° (standard)                               |
| Optical window        | High-grade polycarbonate glass               |
| Luminous flux         | max. 5.700 lm (cool white)                   |
| Operating temperature | -10°C - +50°C                                |
| Casing                | Stainless-steel (SAE316L)                    |
| Protection            | IP 68  |
| Dimensions            | Ø139 x 10 mm                                 |
| Weight                | 0.8 kg                                       |

## Color of lighting

|           |  |
|-----------|--|
| <b>W</b>  | <input type="checkbox"/> cool white      |
| <b>WW</b> | <input type="checkbox"/> warm white      |
| <b>B</b>  | <input type="checkbox"/> blue            |
| <b>G</b>  | <input type="checkbox"/> green           |
| <b>M</b>  | <input type="checkbox"/> RGB multi-color |

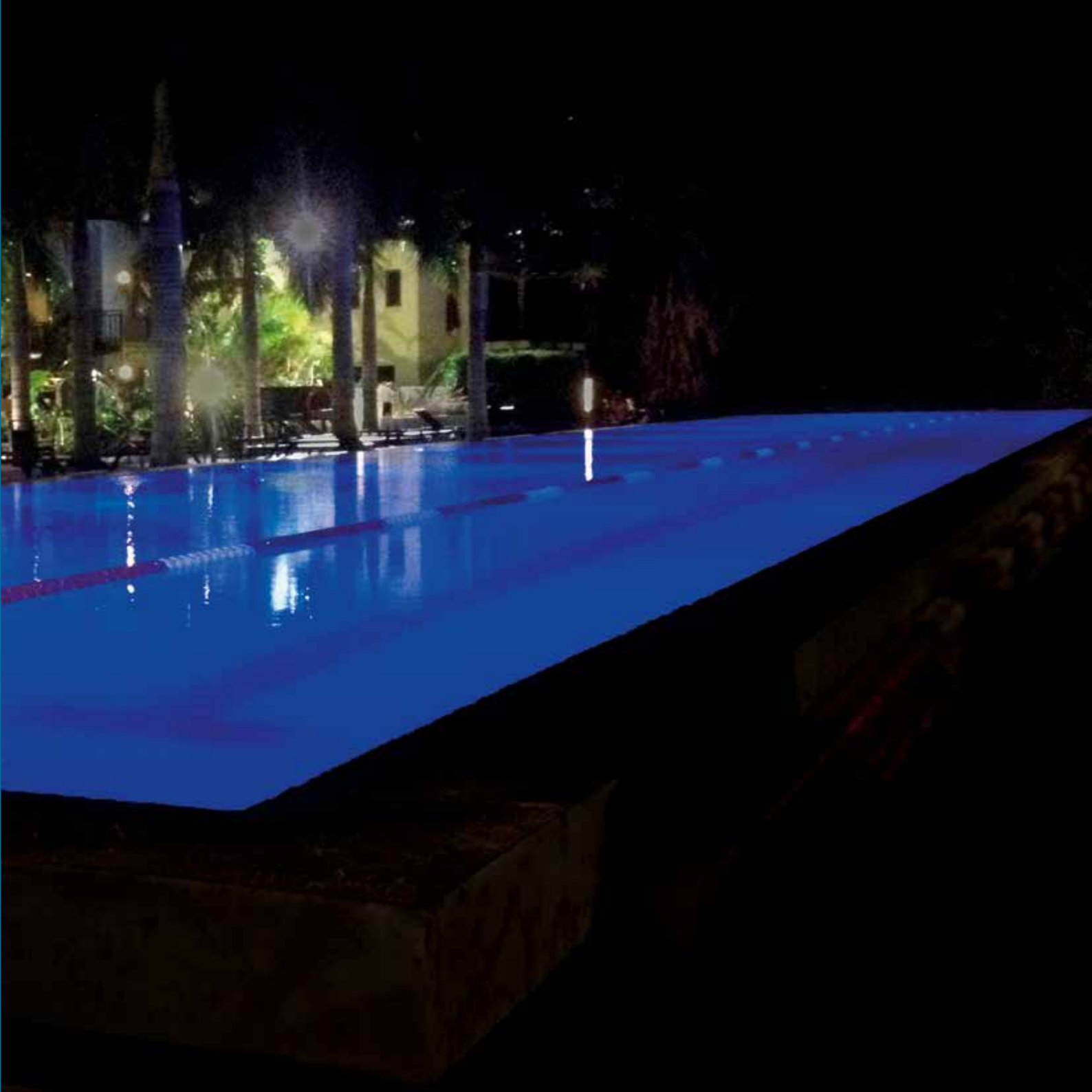
## Beam angle

|          |          |
|----------|----------|
| <b>-</b> | standard |
| <b>D</b> | wide     |



Simply...the brightest





# Underwater Pool LED Lights

Ultra-thin compact surface-mount design.

Single-color light control by using optional momentary switch or optional DMX512 interface LXU01 or LXU03 and PWM dimmer LDU13 with built-in ASTEL protocol.

Multi-color RGB light control with dimming and changing of color of lighting manually or automatically through the complete rainbow spectrum by using optional momentary switch or optional DMX512 interface LXU01 or LXU03 with built-in ASTEL protocol.



## METEOR LSR36500

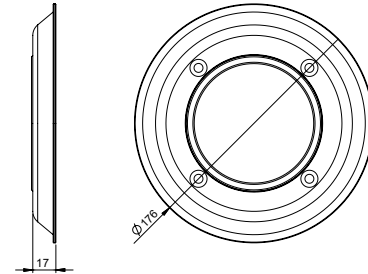
|                       |                                |
|-----------------------|--------------------------------|
| Power supply          | 24 Vdc, max. 3.4 A             |
| Beam angle            | 60° (standard)                 |
| Optical window        | High-grade polycarbonate glass |
| Luminous flux         | max. 8.300 lm (cool white)     |
| Operating temperature | -10°C - +50°C                  |
| Casing                | Stainless-steel (SAE316L)      |
| Protection            | IP 68                          |
| Dimensions            | Ø176 x 17 mm                   |
| Weight                | 2.3 kg                         |

## Color of lighting

|           |                 |
|-----------|-----------------|
| <b>W</b>  | cool white      |
| <b>WW</b> | warm white      |
| <b>B</b>  | blue            |
| <b>G</b>  | green           |
| <b>M</b>  | RGB multi-color |

## Beam angle

|          |          |
|----------|----------|
| <b>-</b> | standard |
| <b>D</b> | wide     |



- Stainless-Steel Casing
- 36 Power LEDs Design
- Cool White, Warm White, Blue, Green and Multi-Color RGB Lighting
- High Grade Polycarbonate Glass Optical Window
- Vacuum Metalized Reflector
- Remote Control
- Microprocessor Control (network)
- Digital Dimming
- Polarity Protection
- Transient Protection
- Thermal Protection
- Low Power Consumption
- Simple Installation

Simply...the brightest



# Underwater Pool LED Lights

Modern compact flush-mount design.

Single-color or Multi-color RGB light control with dimming and changing of color of lighting manually or automatically through the complete rainbow spectrum by using optional momentary switch or optional DMX512 interface LXU01 or LXU03 with built-in ASTEL protocol.



- Stainless-Steel Casing
- 32 Power LEDs Design
- Cool White, Warm White, Blue, Green, Red, Multi-Color RGB and RGBW Lighting
- Tempered Glass Optical Window
- High-Efficiency Lens
- Remote Control
- Microprocessor Control (network)
- Digital Dimming
- Polarity Protection
- Transient Protection
- Thermal Protection
- Low Power Consumption
- Simple Installation

## METEOR XP LFR3210

|                         |  |
|-------------------------|--|
| Power supply            | 12–24 Vdc, max. 9,7 A/12 Vdc or 4.6 A/24 Vdc |
| Beam angle              | 35° (standard)                               |
| Optical window          | Tempered glass 8 mm                          |
| Luminous flux           | max. 10.000 lm (cool white)                  |
| White color temperature | 6.000 K                                      |
| Operating temperature   | -10°C - +50°C                                |
| Casing                  | Stainless-steel (316L)                       |
| Protection              | IP 68  |
| Dimensions              | Ø240 x 220 x 64 mm                           |
| Weight                  | 4.3kg  |

## METEOR XP LFR3215

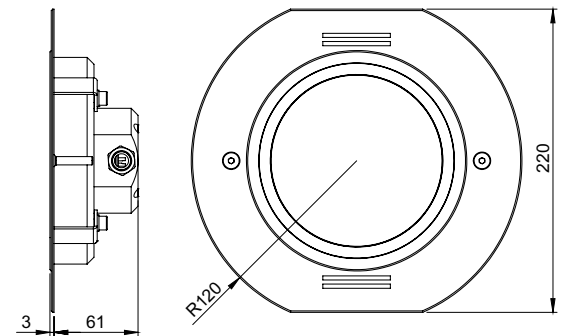
|                         |  |
|-------------------------|--|
| Power supply            | 12–24 Vdc, max. 9,7 A/12 Vdc or 4.6 A/24 Vdc |
| Beam angle              | 35° (standard)                               |
| Optical window          | Tempered glass 8 mm                          |
| Luminous flux           | max. 15.000 lm (cool white)                  |
| White color temperature | 6.000 K                                      |
| Operating temperature   | -10°C - +50°C                                |
| Casing                  | Stainless-steel (316L)                       |
| Protection              | IP 68  |
| Dimensions              | Ø240 x 220 x 64 mm                           |
| Weight                  | 4.3kg  |

### Color of lighting

|             |                  |
|-------------|------------------|
| <b>W</b>    | cool white       |
| <b>WW</b>   | warm white       |
| <b>B</b>    | blue             |
| <b>G</b>    | green            |
| <b>R</b>    | red              |
| <b>RGB</b>  | RGB multi-color  |
| <b>RGBW</b> | RGBW multi-color |

### Beam angle

|          |          |
|----------|----------|
| <b>-</b> | standard |
| <b>D</b> | wide     |
| <b>N</b> | narrow   |



Simply...the brightest



# Accessories

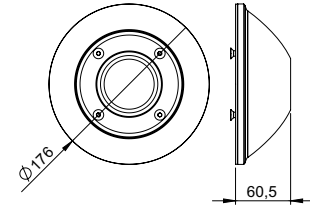
Adapting of METEOR lights to different (existing) PAR56 niches.



## PAR56 Adapter LPAR56 1280

For METEOR LSR1280 series

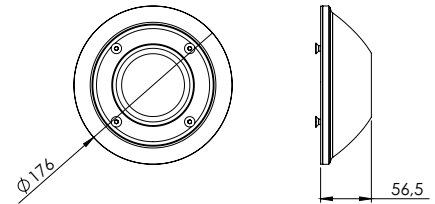
|            |                |
|------------|----------------|
| Material   | UHMW-PE        |
| Dimensions | Ø176 x 60.5 mm |
| Weight     | 0.85 kg        |



## PAR56 Adapter LPAR56 36240

For METEOR LSR36240 and LSR36500 series

|            |                |
|------------|----------------|
| Material   | UHMW-PE        |
| Dimensions | Ø176 x 56.5 mm |
| Weight     | 0.75 kg        |



- For using with METEOR LSR36240, LSR36500 and LSR1280 series
- Black UHMW-PE Body
- Stainless-Steel Screws and Flange
- Simple Installation



- Mounting of METEOR LSR1280, LSR36240 and LSR36500 series to the standard PAR56 niche

# Accessories

Surface-mount installation of METEOR lights.

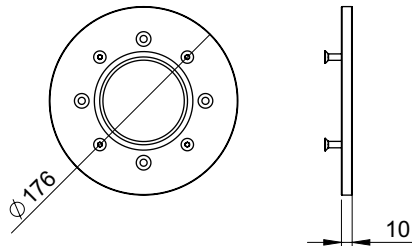


- For using with METEOR series
- Stainless-Steel body
- Stainless-Steel Screws
- Simple Installation

## Surface Mount Niche LSMN 36500

For METEOR LSR36500 series.

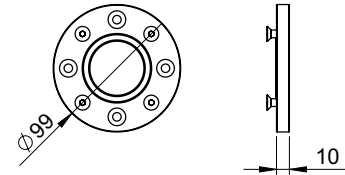
|            |                           |
|------------|---------------------------|
| Material   | Stainless-steel (SAE316L) |
| Dimensions | Ø176 x 10 mm              |
| Weight     | 1.7 kg                    |



## Surface Mount Niche LSMN 0640

For METEOR LSR0640 series.

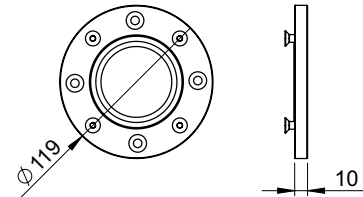
|            |                           |
|------------|---------------------------|
| Material   | Stainless-steel (SAE316L) |
| Dimensions | Ø99 x 10 mm               |
| Weight     | 0.5 kg                    |



## Surface Mount Niche LSMN 1280

For METEOR LSR1280 series.

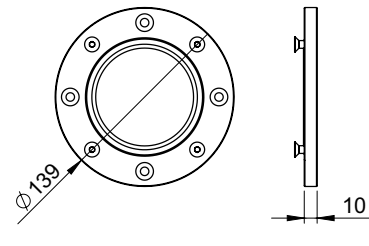
|            |                           |
|------------|---------------------------|
| Material   | Stainless-steel (SAE316L) |
| Dimensions | Ø119 x 10 mm              |
| Weight     | 0.7 kg                    |



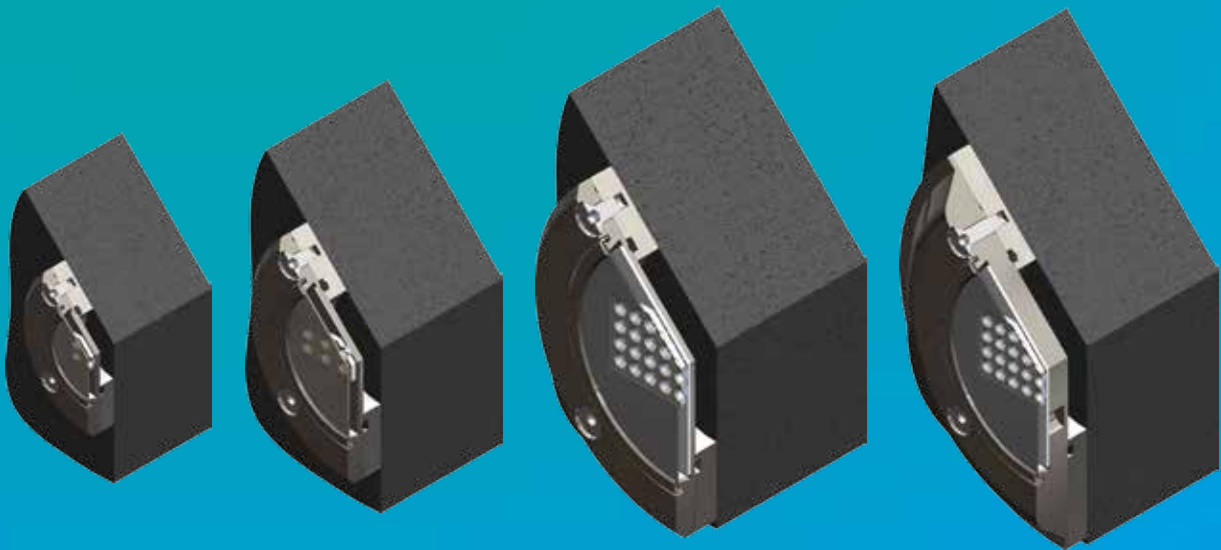
## Surface Mount Niche LSMN 36240

For METEOR LSR36240 series.

|            |                           |
|------------|---------------------------|
| Material   | Stainless-steel (SAE316L) |
| Dimensions | Ø139 x 10 mm              |
| Weight     | 0.9 kg                    |



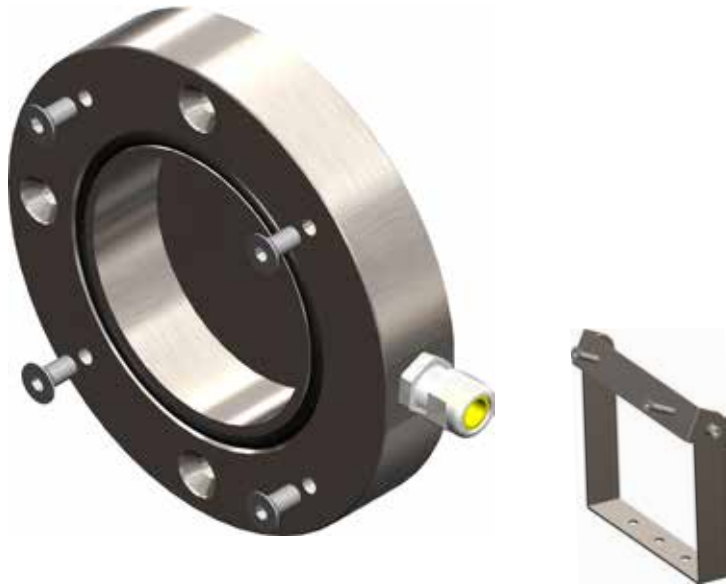




- Surface-mount installation of Meteor series

# Accessories

Surface-mount right-angle cable installation of METEOR lights with lighting direction adjustment possibility.

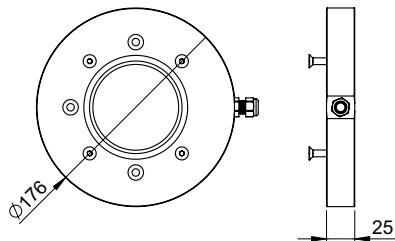


- For using with METEOR series
- Stainless-Steel body
- Stainless-Steel Screws
- PVDF Cable Gland
- Simple Installation

## Surface-Mount Right-Angle Niche LRMN 36500

For METEOR LSR36500 series.

Material Stainless-steel (SAE316L)  
 Dimensions  $\text{Ø}176 \times 25 \text{ mm}$   
 Weight 4.0 kg



## Surface-Mount Right-Angle Niche Accessory LSB 36500

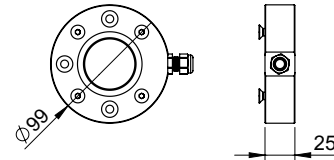
For METEOR LSR36500 series.

Material Stainless-steel (SAE316L)  
 Dimensions  $155 \times 176 \times 30 \text{ mm}$   
 Weight 0.5 kg

## Surface-Mount Right-Angle Niche LRMN 0640

For METEOR LSR0640 series.

Material Stainless-steel (SAE316L)  
 Dimensions  $\text{Ø}99 \times 25 \text{ mm}$   
 Weight 1.3 kg



## Surface-Mount Right-Angle Niche Accessory LSB 0640

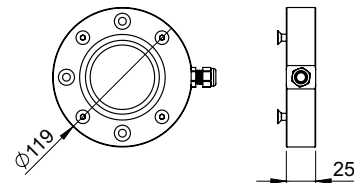
For METEOR LSR0640 series.

Material Stainless-steel (SAE316L)  
 Dimensions  $107 \times 100 \times 20 \text{ mm}$   
 Weight 0.3 kg

## Surface-Mount Right-Angle Niche LRMN 1280

For METEOR LSR1280 series.

Material Stainless-steel (SAE316L)  
 Dimensions  $\text{Ø}119 \times 25 \text{ mm}$   
 Weight 1.8 kg



## Surface-Mount Right-Angle Niche Accessory LSB 1280

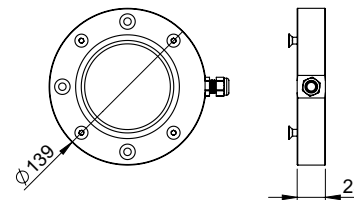
For METEOR LSR1280 series.

Material Stainless-steel (SAE316L)  
 Dimensions  $117 \times 120 \times 20 \text{ mm}$   
 Weight 0.3 kg

## Surface-Mount Right-Angle Niche LRMN 36240

For METEOR LSR36240 series.

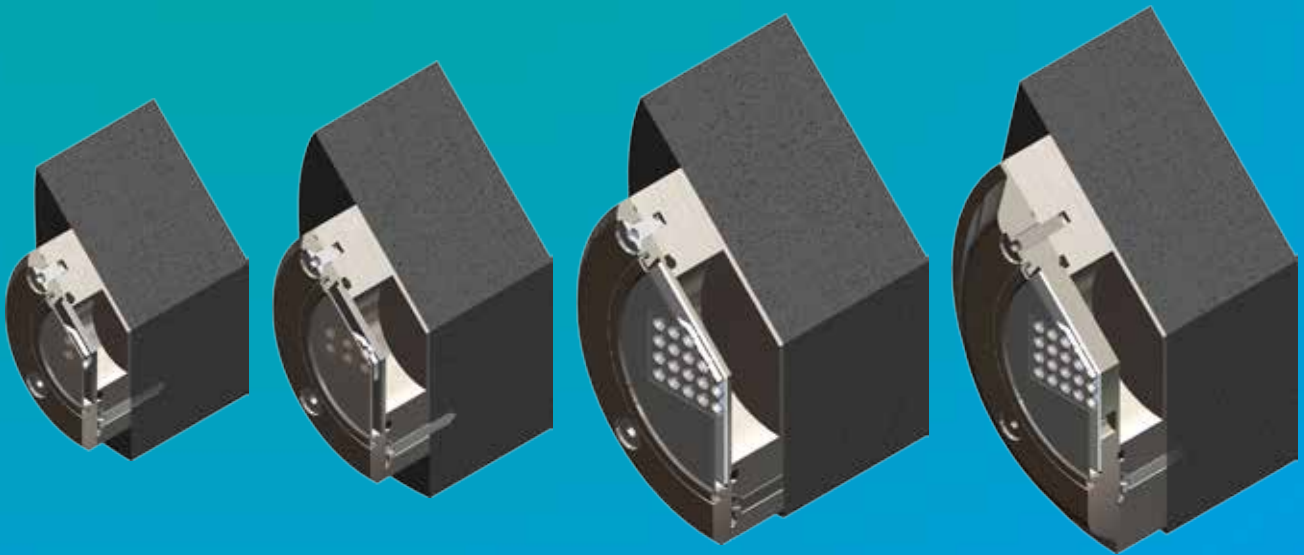
Material Stainless-steel (SAE316L)  
 Dimensions  $\text{Ø}139 \times 25 \text{ mm}$   
 Weight 2.2 kg



## Surface-Mount Right-Angle Niche Accessory LSB 36240

For METEOR LSR36240 series.

Material Stainless-steel (SAE316L)  
 Dimensions  $132 \times 140 \times 25 \text{ mm}$   
 Weight 0.4 kg



- Surface-mount right-angle cable installation of METEOR series

# Accessories

Installation of METEOR lights to concrete pools with ceramic tile finish.

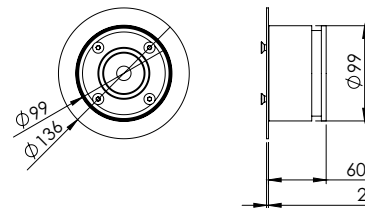


- For using with METEOR series
- Black UHMW-PE Body
- Stainless-Steel Screws and Flange
- Simple Installation

## Concrete Pool Niche LCPN 0640

For METEOR LSR0640 series.

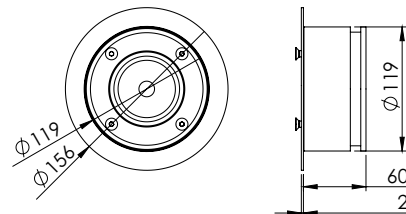
Material UHMW-PE  
Dimensions  $\varnothing 99 \times 60$  mm  
Weight 0.5 kg



## Concrete Pool Niche LCPN 1280

For METEOR LSR1280 series.

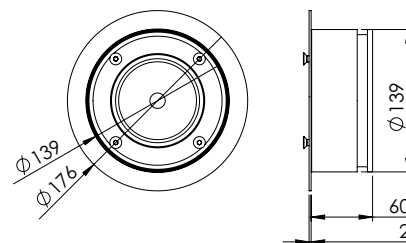
Material UHMW-PE  
Dimensions  $\varnothing 119 \times 60$  mm  
Weight 0.7 kg

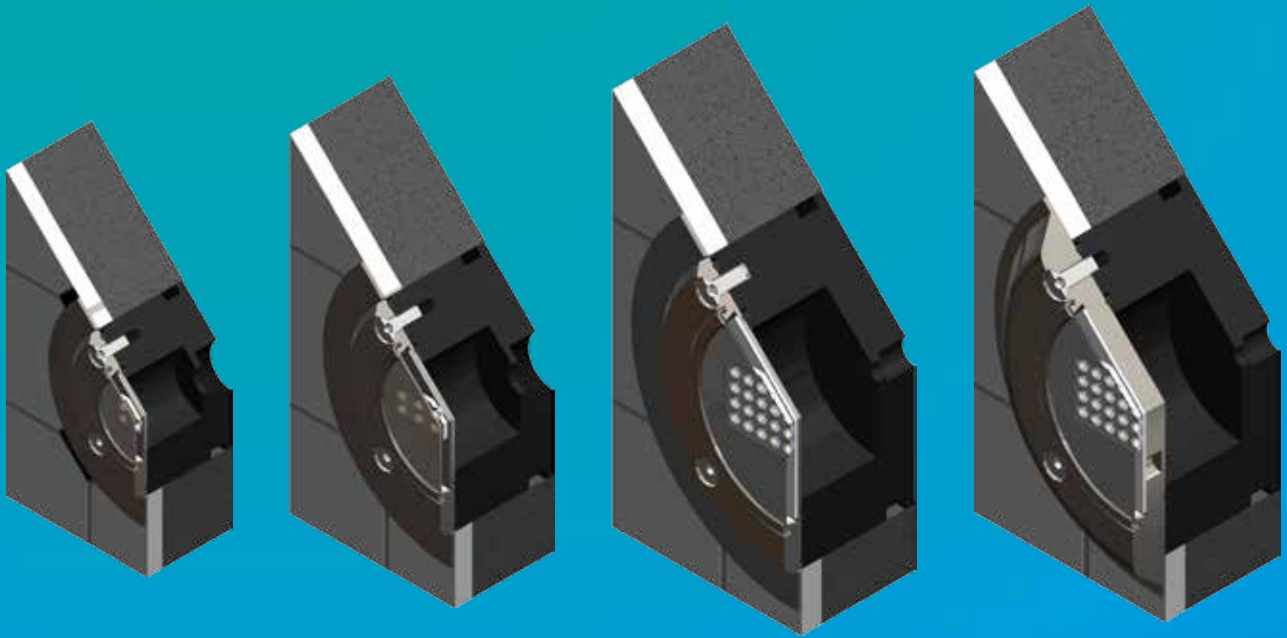


## Concrete Pool Niche LCPN 36240

For METEOR LSR36240 and LSR36500 series.

Material UHMW-PE  
Dimensions  $\varnothing 139 \times 60$  mm  
Weight 0.9 kg





- Installation of METEOR series to ceramic tile finish pools

# Accessories

Installation of METEOR lights to polyester or liner/concrete pools.



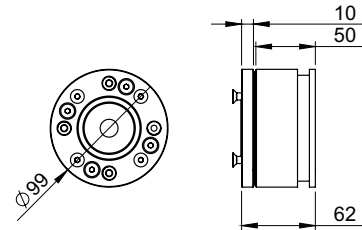
- For using with METEOR series
- Black UHMW-PE Body
- Stainless-Steel Screws and Flange
- Simple Installation

## Liner Pool Niche LLPN 0640

For METEOR LSR0640 series.

Material  
Dimensions  
Weight

UHMW-PE  
Ø99 x 60 mm  
0.5 kg

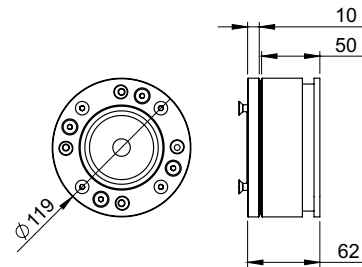


## Liner Pool Niche LLPN 1280

For METEOR LSR1280 series.

Material  
Dimensions  
Weight

UHMW-PE  
Ø119 x 60 mm  
0.7 kg

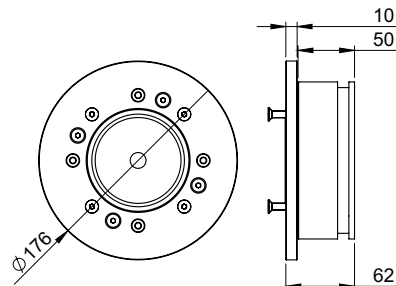


## Liner Pool Niche LLPN 36500

For METEOR LSR36500 series.

Material  
Dimensions  
Weight

UHMW-PE  
Ø176 x 60 mm  
1.0 kg

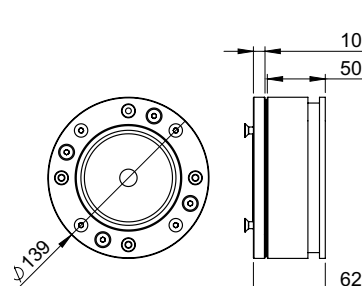


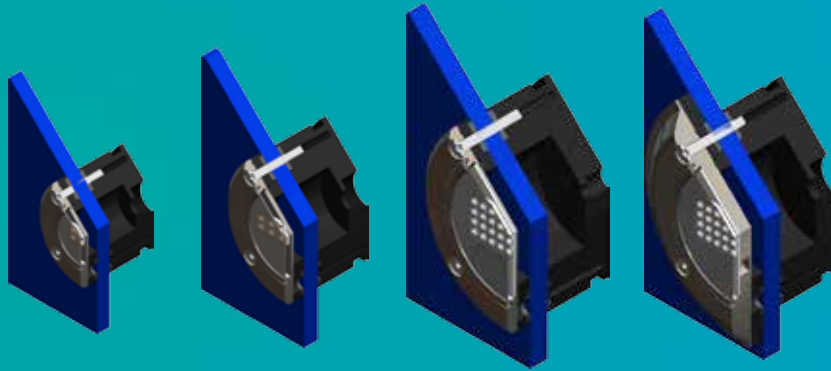
## Liner Pool Niche LLPN 36240

For METEOR LSR36240 series.

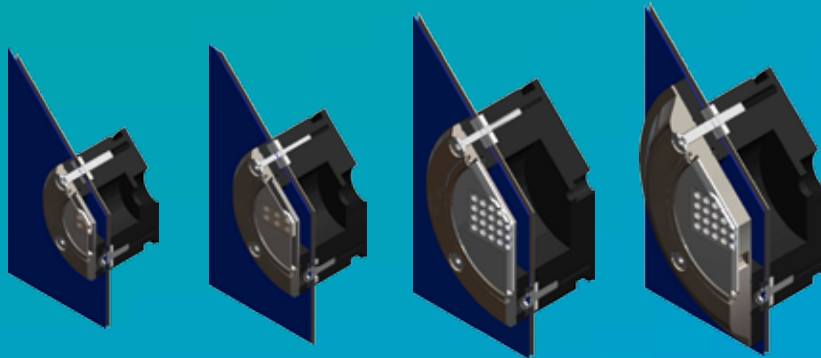
Material  
Dimensions  
Weight

UHMW-PE  
Ø139 x 60 mm  
0.9 kg

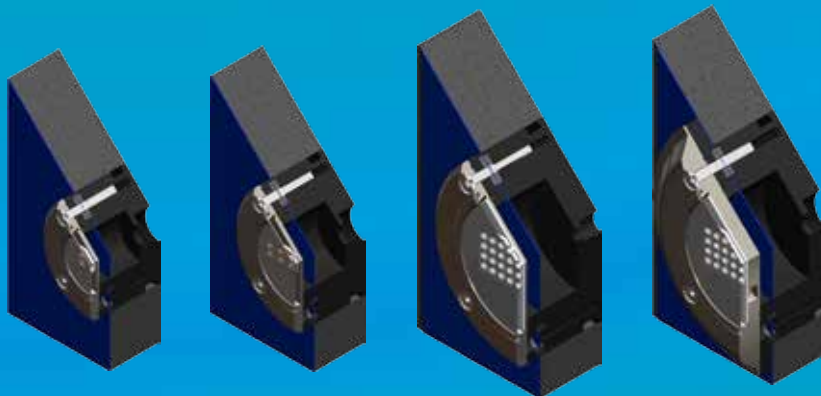




- Installation of METEOR series to polyester pools



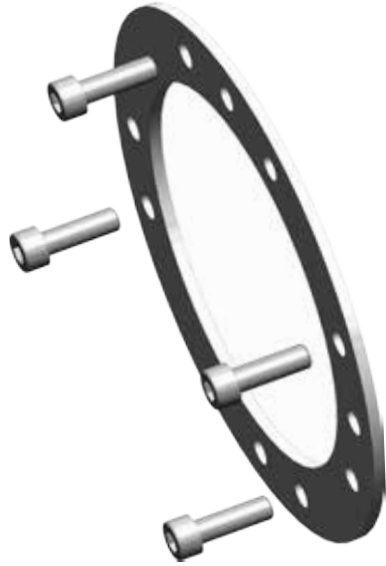
- Installation of METEOR series to liner/stainless-steel pools



- Installation of METEOR series to liner/concrete pools

# Accessories

Accessories of LLPN niche series for installation of METEOR lights to liner and liner/stainless-steel pools.



- For using with Liner Pool Niche LLPN series
- Elastomer and Stainless-Steel Body
- Stainless-Steel Screws
- Simple Installation

## **Liner / Stainless-Steel Pool Niche Accessory LLS 0640**

For METEOR LSR0640 series.

|            |                     |
|------------|---------------------|
| Material   | Elastomer NBR 65 Sh |
| Dimensions | Ø99 mm              |
| Weight     | 0.1 kg              |

## **Liner / Stainless-Steel Pool Niche Accessory LLS 1280**

For METEOR LSR1280 series.

|            |                     |
|------------|---------------------|
| Material   | Elastomer NBR 65 Sh |
| Dimensions | Ø119 mm             |
| Weight     | 0.1 kg              |

## **Liner / Stainless-Steel Pool Niche Accessory LLS 36240**

For METEOR LSR36240 and LSR36500 series.

|            |                     |
|------------|---------------------|
| Material   | Elastomer NBR 65 Sh |
| Dimensions | Ø139 mm             |
| Weight     | 0.1 kg              |

## **Liner Pool Niche Accessory LLR 0640**

For METEOR LSR0640 series.

|            |                           |
|------------|---------------------------|
| Material   | Stainless-steel (SAE316L) |
| Dimensions | Ø99 x 10 mm               |
| Weight     | 0.6 kg                    |

## **Liner Pool Niche Accessory LLR 1280**

For METEOR LSR1280 series.

|            |                           |
|------------|---------------------------|
| Material   | Stainless-steel (SAE316L) |
| Dimensions | Ø119 x 10 mm              |
| Weight     | 0.8 kg                    |

## **Liner Pool Niche Accessory LLR 36240**

For METEOR LSR36240 series.

|            |                           |
|------------|---------------------------|
| Material   | Stainless-steel (SAE316L) |
| Dimensions | Ø139 x 10 mm              |
| Weight     | 1 kg                      |

## **Liner Pool Niche Accessory LLR 36500**

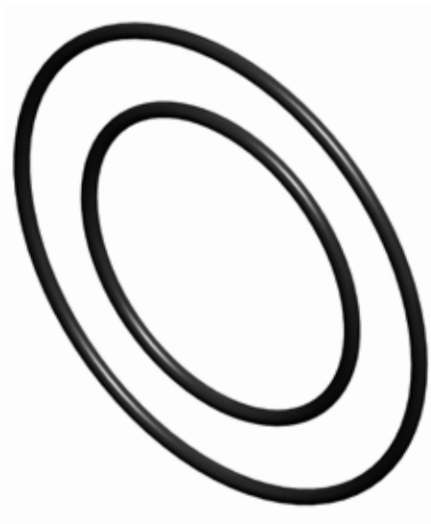
For METEOR LSR36500 series.

|            |                           |
|------------|---------------------------|
| Material   | Stainless-steel (SAE316L) |
| Dimensions | Ø176 x 10 mm              |
| Weight     | 1.6 kg                    |



# Accessories

Surface-mount installation of single-color or multi-color RGB lights.



## **Gasket LSG 0640**

For METEOR LSR0640 series.

|            |                     |
|------------|---------------------|
| Material   | Elastomer NBR 65 Sh |
| Dimensions | Ø99                 |
| Weight     | 0.1 kg              |

## **Gasket LSG 1280**

For METEOR LSR1280 series.

|            |                     |
|------------|---------------------|
| Material   | Elastomer NBR 65 Sh |
| Dimensions | Ø139                |
| Weight     | 0.1 kg              |

## **Gasket LSG 36240**

For METEOR LSR36240 and LSR36500 series.

|            |                     |
|------------|---------------------|
| Material   | Elastomer NBR 65 Sh |
| Dimensions | Ø199                |
| Weight     | 0.1 kg              |

## **O-Ring LSO 0640**

For METEOR LSR0640 series.

|            |                  |
|------------|------------------|
| Material   | Elastomer NBR 70 |
| Dimensions | Ø86 / Ø44 mm     |
| Weight     | 0.1 kg           |

## **O-Ring LSO 1280**

For METEOR LSR01280 series.

|            |                  |
|------------|------------------|
| Material   | Elastomer NBR 70 |
| Dimensions | Ø108 / Ø63 mm    |
| Weight     | 0.1 kg           |

## **O-Ring LSO 36240**

For METEOR LSR36240 and LSR36500 series.

|            |                  |
|------------|------------------|
| Material   | Elastomer NBR 70 |
| Dimensions | Ø126 / Ø82 mm    |
| Weight     | 0.1 kg           |

- For using with METEOR series
- Simple Installation

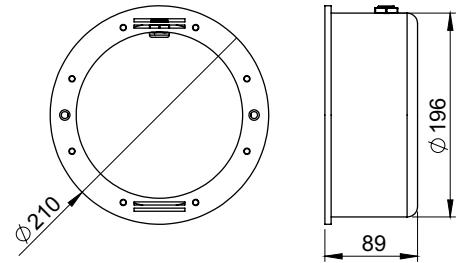
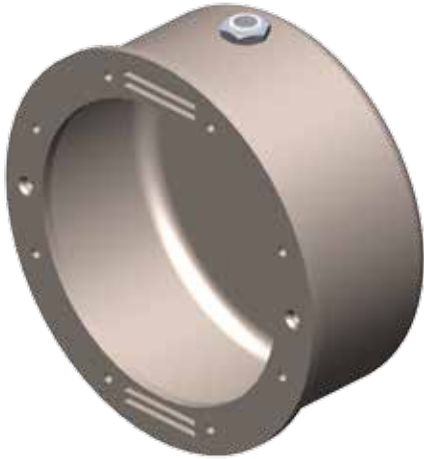
# Accessories

Installation of METEOR XP lights to stainless-steel or concrete pools with ceramic tile finish.

## Concrete Pool Niche LCPN XP32

For METEOR XP series.

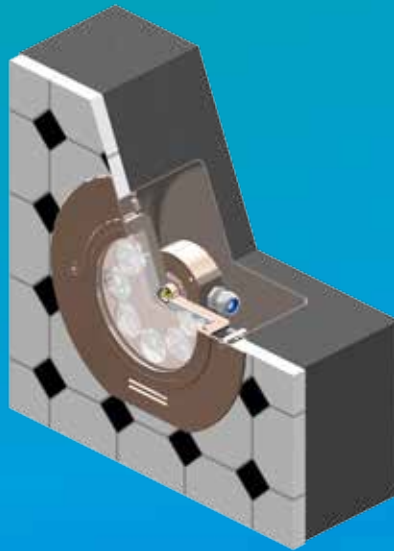
|            |                           |
|------------|---------------------------|
| Material   | Stainless-steel (SAE316L) |
| Dimensions | Ø210 x 89 mm              |
| Weight     | 2.0 kg                    |



- For using with METEOR XP series
- Stainless-Steel Body



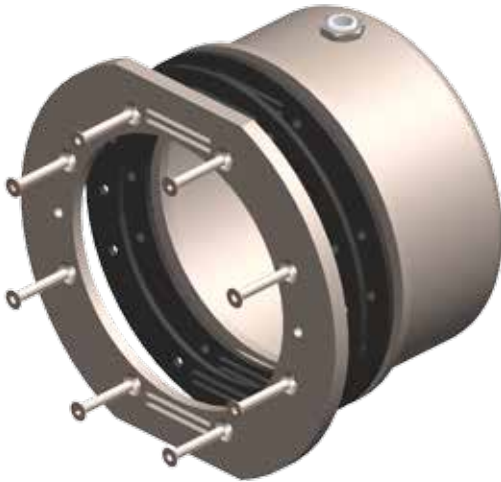
- Installation of METEOR XP series to stainless-steel pools



- Installation of METEOR XP series to concrete pools with ceramic tiles finish

# Accessories

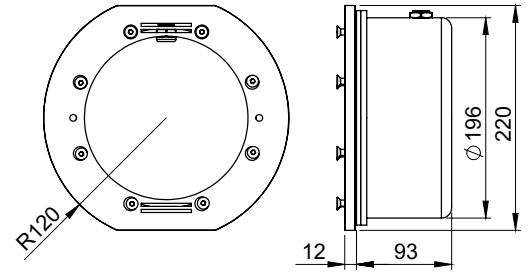
Installation of METEOR XP lights to liner/concrete pools.



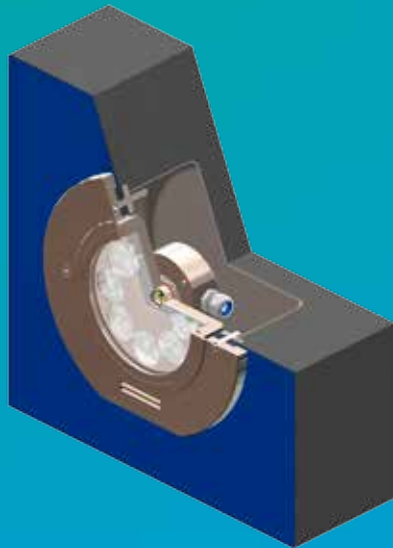
## Liner Pool Niche LLPN XP32

For METEOR XP series.

|            |                           |
|------------|---------------------------|
| Material   | Stainless-steel (SAE316L) |
| Dimensions | Ø240 x 220 x 105 mm       |
| Weight     | 3.7 kg                    |



- For using with METEOR XP series
- Stainless-Steel Body
- Stainless-Steel Flange and Screws
- Elastomer Gaskets



- Installation of METEOR XP series to liner/concrete pools

# Accessories

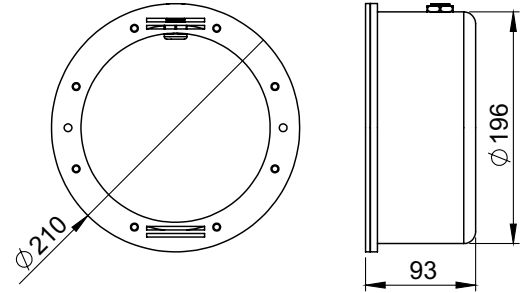
Installation of METEOR XP lights to liner/concrete pools.



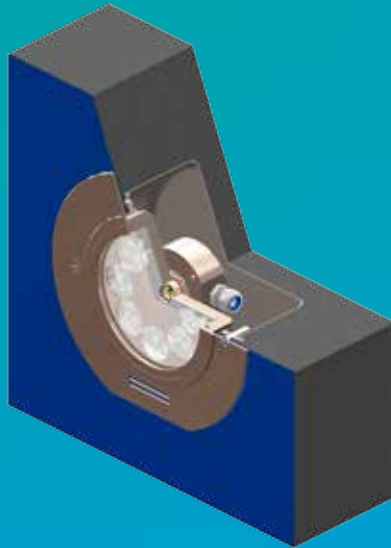
## Liner Pool Niche LLGN XP32

For METEOR XP series.

|            |                           |
|------------|---------------------------|
| Material   | Stainless-steel (SAE316L) |
| Dimensions | Ø210 x 93 mm              |
| Weight     | 2.1 kg                    |



- For using with METEOR XP series
- Stainless-Steel Body
- Elastomer Gasket



- Installation of METEOR XP series to liner/concrete pools

# Accessories

Synchronization of color of lighting for complete group of multi-color RGB lights when automatical changing of color of lighting through the complete rainbow spectrum is selected and controlled by using optional momentary switch.

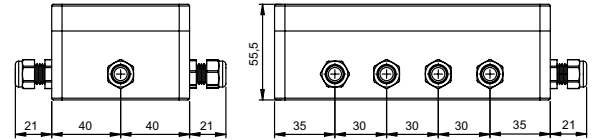


- 8 Synchronization Outputs
- Wide Range Power Supply
- Low Power Consumption
- Polarity Protection
- Transient Protection
- Short Circuit Output Protection
- Simple Installation

## Synchronization Unit LSU08

For multi-color RGB METEOR series.

|                       |                     |
|-----------------------|---------------------|
| Input voltage         | 12-24 Vdc           |
| Consumption           | max. 10 mAdc        |
| Operating temperature | -10°C - +50°C       |
| Casing                | ABS                 |
| Protection            | IP 65               |
| Dimensions            | max. 181x122x55.5mm |
| Weight                | 0.3 kg              |



Dimming of single-color lights or group of lights by using optional momentary switch. Built-in ASTEL protocol to control single-color lights or group of lights by using optional DMX512 interface LXU01 or LXU03.

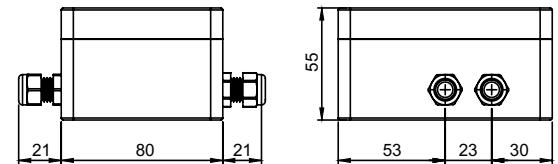


- 3 Control Outputs
- Adjustable PWM Frequency
- Wide Range Power Supply
- Low Power Consumption
- Polarity Protection
- Transient Protection
- Short Circuit Output Protection
- Simple Installation

## PWM Dimmer LDU13

For single-color METEOR series.

|                                |                     |
|--------------------------------|---------------------|
| Input voltage                  | 12-24 Vdc           |
| Consumption                    | max. 10 mAdc        |
| ASTEL protocol default address | 1                   |
| Operating temperature          | -10°C - +50°C       |
| Casing                         | ABS                 |
| Protection                     | IP 65               |
| Dimensions                     | max. 106x122x55.5mm |
| Weight                         | 0.2 kg              |





# Accessories

DMX512 to ASTEL protocol multi-light converter to control single-color or multi-color RGB light or one group of lights with built-in ASTEL protocol.



- 1 Control Output
- DIP-switch Programmable
- Multi - Speed Mode
- Wide Range Power Supply
- Low Power Consumption
- Polarity Protection
- Transient Protection
- Short Circuit Output Protection
- Simple Installation

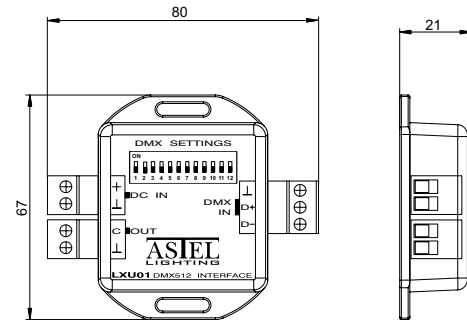
DMX512 to ASTEL protocol multi-light converter to control single-color or multi-color RGB lights or up to 3 groups lights with built-in ASTEL.



- 3 Control Outputs
- DIP-switch Programmable
- Low Speed Mode
- Wide Range Power Supply
- Low Power Consumption
- Polarity Protection
- Transient Protection
- Short Circuit Output Protection
- Simple Installation

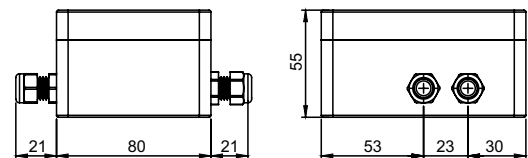
## DMX512 Interface LXU01

|                       |                 |
|-----------------------|-----------------|
| Input voltage         | 12-24 Vdc       |
| Consumption           | max. 50 mAdc    |
| Operating temperature | -10°C - +50°C   |
| Casing                | ABS             |
| Dimensions            | max. 67x80x21mm |
| Weight                | 0.1 kg          |



## DMX512 Interface LXU03

|                       |                     |
|-----------------------|---------------------|
| Input voltage         | 12-24 Vdc           |
| Consumption           | max. 50 mAdc        |
| Operating temperature | -10°C - +50°C       |
| Casing                | ABS                 |
| Protection            | IP 65               |
| Dimensions            | max. 106x122x55.5mm |
| Weight                | 0.2 kg              |









**ASTEL**  
**LIGHTING**

ASTEL d.o.o. • Dutovlje 138 • 6221 Dutovlje • Slovenia • [www.astel-lighting.com](http://www.astel-lighting.com)  
info@astel-lighting.com • Tel.: +386 5 7310771 • Fax: +386 5 7310789